

# COMMERCIAL REAL ESTATE

1500 WEST MAIN STREET/LEESTOWN ROAD | LEXINGTON | KENTUCKY | 40511

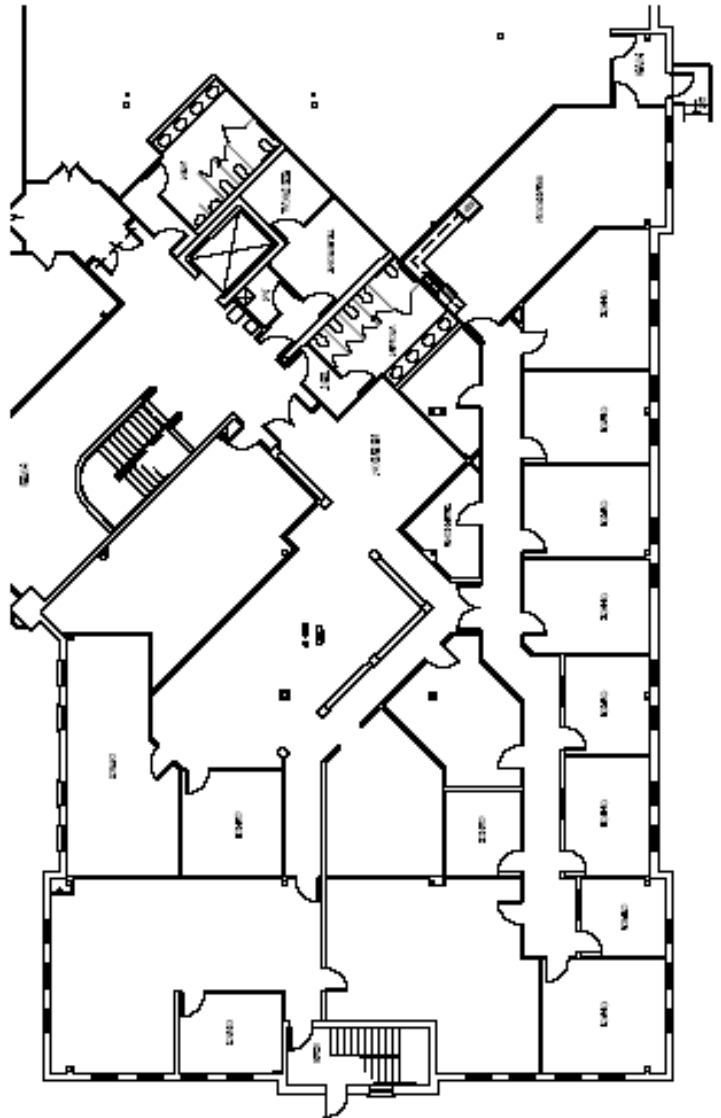
[www.WinmarCorporation.com](http://www.WinmarCorporation.com)

# THE TATE BUILDING



## HIGHLIGHTS

- ◆ ± 7,954 SF Prime First Floor Space Available
- ◆ Traffic Count = 23,100
- ◆ High Trafficked area
- ◆ Fast Growing Area of Lexington
- ◆ Prime space available - Will go fast!
- ◆ Convenient to US-421, New Circle, and Downtown.



Winmar Corporation

OFFICE SPACE AVAILABLE

# PRIME LOCATION

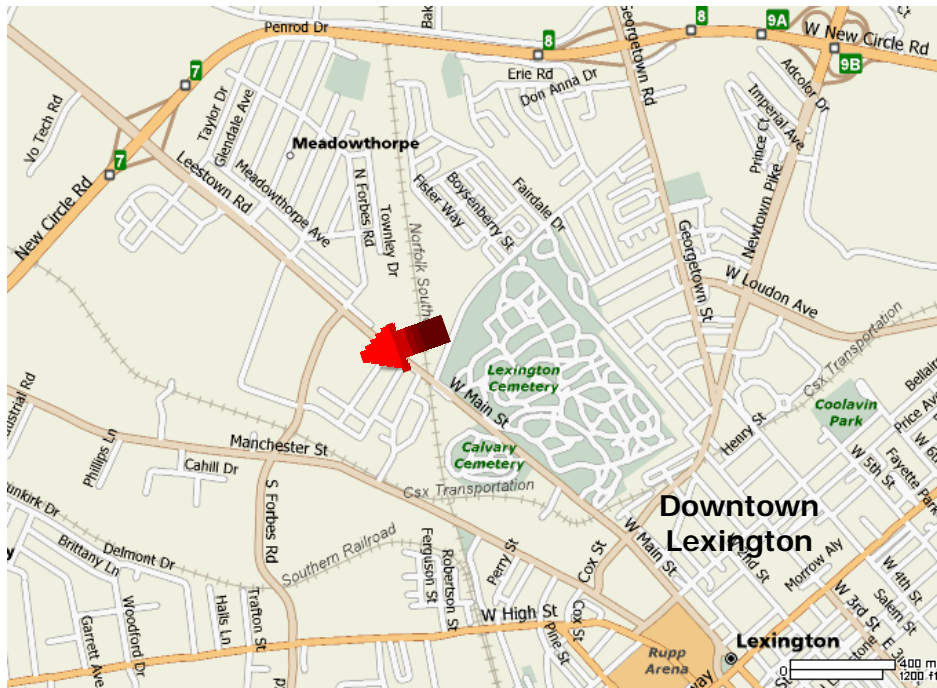
1500 W Main St./Leestown Rd., Lexington, KY 40511



## Office Space

The Tate Building offers convenience with access to New Circle Road and downtown.

- ± 7,954 SF Available
- Prime 1st Floor space
- Traffic count: 23,100 cars
- Call for Competitive Rates
- Full Service Leases
- Ample Free Parking
- High Quality Maintenance



### Driving Times:

New Circle	2 minute
Downtown Lexington	6 minutes
I-64/I-75	7 minutes
Bluegrass Airport	12 minutes
Keeneland Horse Track	12 minutes

To learn more contact  
**Winmar Corporation**

Contact:

Sandra Douglass,  
Property Manager

P (859) 254-5755

C (859) 361-8199

F (859) 231-729

[wwinmar@aol.com](mailto:wwinmar@aol.com)

[www.WinmarCorporation.com](http://www.WinmarCorporation.com)